



McDonough Medical Pavilion

A Division of
Henry Medical Center

MRI

CT Scans

Digital Mammography

Bone Density

Diagnostic X-Ray

Ultrasound

Diagnostic Imaging Services



- **Same-Day/Next-Day Scheduling**

We can schedule your appointment faster.
Monday through Friday, extended evening hours
to accommodate your patients.

- **Quick Turnaround on Radiology Reports**

We can turnaround most reports same day.
Stat Reports available upon request.

- **Images and Reports Available On-line and on CD**

Patient data available on demand with PACS.
Simply ask our PACS administrator or Director of Radiology
to get you connected.

- **Patient Convenience**

Central Location; Easy Parking
Quick Registration
State-of-the-art Diagnostic Imaging Center

Outpatient Scheduling

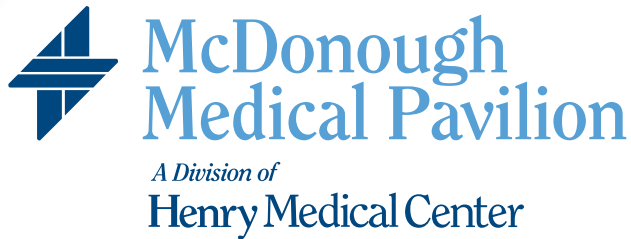
678-604-1055

Fax **678-604-5028**

www.henrymedical.com

Enjoy the best in radiology when you need it.

The Diagnostic Imaging Center at McDonough Medical Pavilion provides superior service by using highly trained technologists and the area's most advanced imaging equipment.



**Diagnostic
Imaging Center**
678-604-4000

★ **Monday–Friday: 8 AM – 7 PM**

MRI

Philips Intera 1.5T

CT

Philips 16 slice CT

Digital Mammography

Hologic Digital Mammography

Bone Density

Dexa Bone Densitometry unit

★ **Diagnostic X-Ray**

Monday-Friday: 8 AM to 10 PM

Saturdays: 10 AM to 10 PM

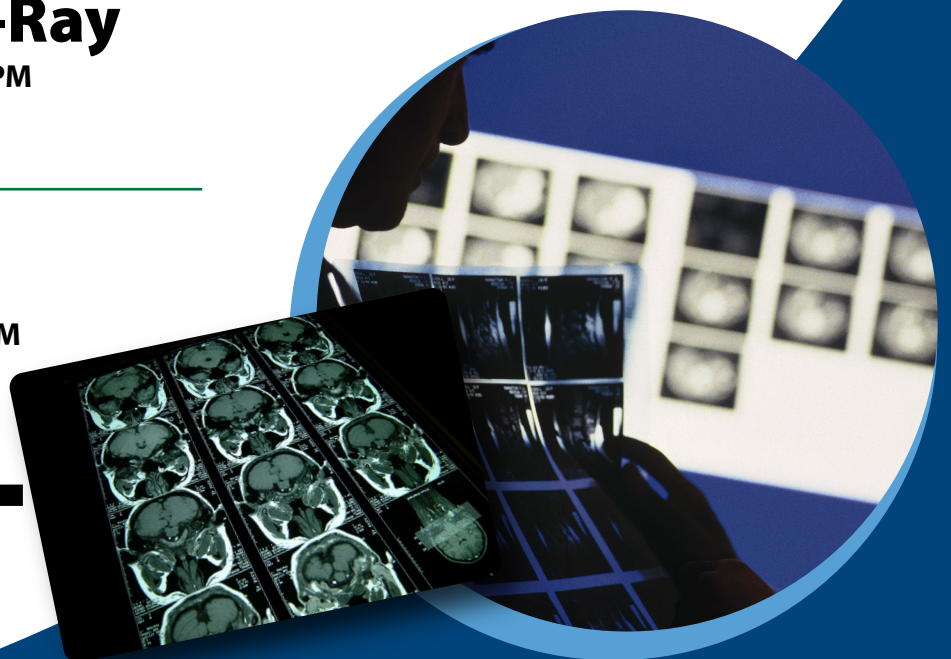
Sundays: 2 PM to 10 PM

★ **Ultrasound**

Philips technology

Monday-Friday: 8 AM to 4 PM

101 Regency Park Drive, Suite 100
McDonough, GA 30253



www.henrymedical.com