

Henry Medical Center and McDonough Medical Pavilion are dedicated to excellence in every facet of diagnostic imaging.



1133 Eagle's Landing Parkway • Stockbridge GA 30281



A Division of Henry Medical Center

101 Regency Park Drive, Suite 100 • McDonough, GA 30253

If you have any questions, please call the Imaging Department at 678-604-1055

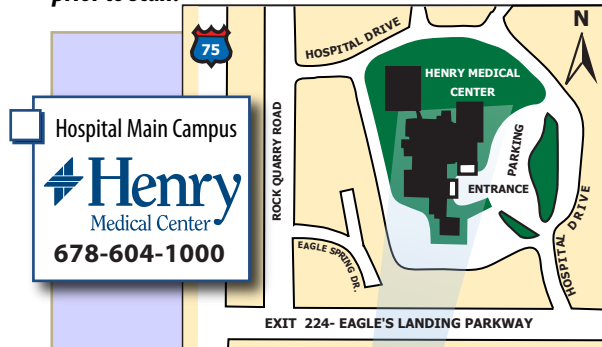
Please visit our website henrymedical.com

Your Appointment Date _____

Your Appointment Time _____

Please arrive 15 minutes prior to scan.

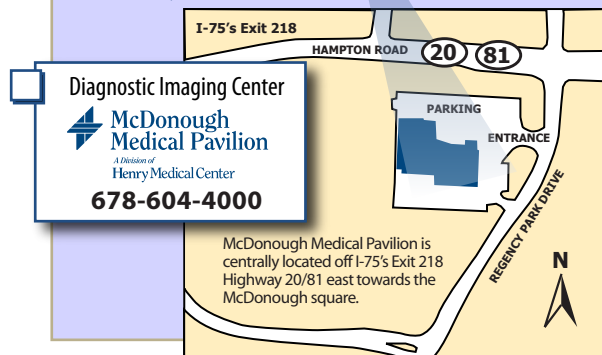
Location Hospital Main Campus McDonough Medical Pavilion



1133 Eagle's Landing Parkway • Stockbridge GA 30281



101 Regency Park Drive, Suite 100 • McDonough, GA 30253



CT Scan



Computed Tomography



A Division of Henry Medical Center

Please check in at the Outpatient Registration Reception Desk. Arrive 15 minutes prior to your scheduled appointment.

Why Should You Choose Henry Medical Center/McDonough Medical Pavilion For Your CT Scan?

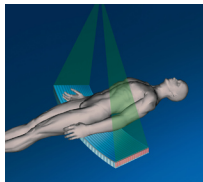
In most cases, you have a choice of facilities when it comes to scheduling your CT scan. When you choose Henry Medical Center/McDonough Medical Pavilion, you have the advantage of:

- State-of-the-art, multi-row detector scanner, sometimes referred to as multi-slice scanner, which means that the scanner is very fast. The scanner takes multiple pictures (i.e. four pictures) with every one spin of the X-ray tube.
- An exam time that takes less than 20 minutes
- A licensed and registered technologist with several years of experience in the field of computed tomography
- On-site board certified radiologist

The following information will help you to understand the basics about your CT scan, but please feel free to call with any specific questions or concerns you may have.

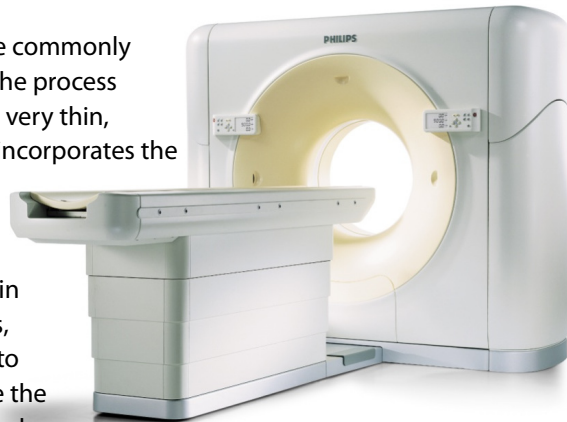
What is CT?

Computed Tomography, more commonly called CT or CAT scanning, is the process of making an X-ray image of a very thin, cross-section of the body. CT incorporates the most advanced technology in electronics and computer science,



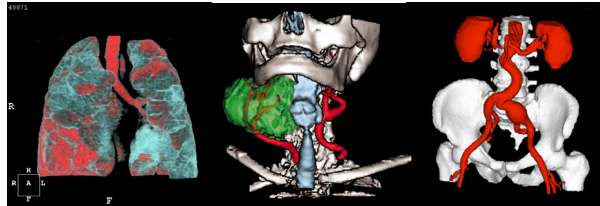
resulting in a painless, safe way to see inside the human body without surgery.

During CT scanning, an X-ray beam passes through the body and is recorded by several electronic detectors. The X-ray tube spins a full 360 degrees around the body part being scanned and produces



hundreds of thousands of different signals, which are then relayed to the computer, where it is translated into an image that a radiologist will use to develop a diagnosis.

The CT scanner used is state-of-the-art technology that rapidly allows the physician to more accurately diagnose your condition while sparing discomfort, cost and long exam times normally associated with other diagnostic procedures.



What to Expect

You can expect to be very comfortable during your scan. Before you schedule, remember to tell your doctor or technologist if you are:

- Pregnant or think you may be
- Allergic to iodine or other materials
- Undergoing radiation therapy

Once you are scheduled for your exam, you may wear your own "sweats" or change into a gown after you arrive.

Avoid wearing jewelry and eye makeup when having a scan of the head and neck, as metallics may

interfere with the accuracy of the film image.

After meeting with your CT technologist who will explain the procedure and answer any of your questions, you will be gently positioned and secured on a scan table. This is to prevent the slightest movement, which may blur the picture and result in the need for repeated scans.

In some cases, your CT technologist will ask you to prepare for your scan with a special diet, fasting or medication. Certain CT scans require we use a type of X-ray dye or "contrast" that allows us to see certain areas more clearly. The contrast is usually administered by drinking or through an intravenous (IV) injection—or both. It is normal to feel a warm sensation or a metallic taste in your mouth as the dye makes its way through your body.

When everything is ready and you are in place, you will be moved into the scanner. Our scanner is about the size of a circular doorway. While you are in the scanner, the technologist will have you in full view at all times and be in constant communication via two-way microphones. During this brief time, you will hear the humming of the equipment as it produces the images. You may also feel slight movement of the table as it prepares for the next sequence.

How Long Will It Take?

The entire examination usually takes no more than 30 minutes. This allows for preparation as well as time for the computer to generate the image. Depending on the nature of your CT scan, the time may vary significantly.

How Will I Learn the Results?

A board-certified radiologist will report the results of your examination to your doctor, who will then discuss the findings with you, based on your clinical history.

We currently accept most insurance plans.